

Seventeenth Colloquium on Cemeteries
20th May, King's Manor, University of York



Cemeteries in Luxembourg: An introduction to a border region

Thomas Kolnberger (Christoph K. Streb)

University of Luxembourg
Research Unit IPSE – Institute of History

A – the project

B – cemeteries in Luxembourg

A – the project



Area: 2,586.40 km²
Population: 576,000
Languages: Luxembourgish
French
German
Portuguese
English
Foreign population: 46,7 % (2016)



Area of interregional cooperation
between
France, Germany, Belgium and Luxembourg

Material Culture and Spaces of Remembrance.

A Study of Cemeteries in Luxembourg in the Context of the Greater Region

Co-funded:



UNIVERSITÉ DU LUXEMBOURG
Unité de Recherche
Identités, Politiques, Sociétés, Espaces (IPSE)



Fonds National de la
Recherche Luxembourg

Project duration: 36 months (start 1st of August 2015 – 31st of July 2018)

The team (University of Luxembourg)

Dr Elisabeth Boesen

Assoc. Prof. Geoffrey Caruso

Assoc. Prof. Sonja Kmec (PI)

Dr Thomas Kolnberger (coordinator)

Dr / PhD cand. Christoph Streb

PhD cand. NN

Areas of expertise

Ethnology and Social Anthropology

Quantitative Geography

Cultural Studies and Luxembourg Studies

History and Historical Geography

Business Administration and Historical Archaeology

Sociology / Ethnography

The scientific board

Dr Thorsten Benkel

Universität Passau, Germany

Prof. Anne Carol

Université Aix-Marseilles, France

Dr Anne Fornerod

CNRS, Université de Strasbourg

Prof. Jean-Paul Lehnens

Université du Luxembourg

Dr David Petts

University of Durham, GB

Dr Julie Rugg

University of York, GB

Sociology of the Cemetery

Histoire du corps vivant et mort à l'époque contemporaine

Law History

History of Luxembourg and Demography

Archaeology

Cemetery Research

“Research philosophy” of the projet

Main research question:

Why do cemeteries in Luxembourg look like they are?

Leading research model:

“atypical” Grounded theory

First approach:

Material positivism (physical evidence: *cemeteries as material epiphenomena*)

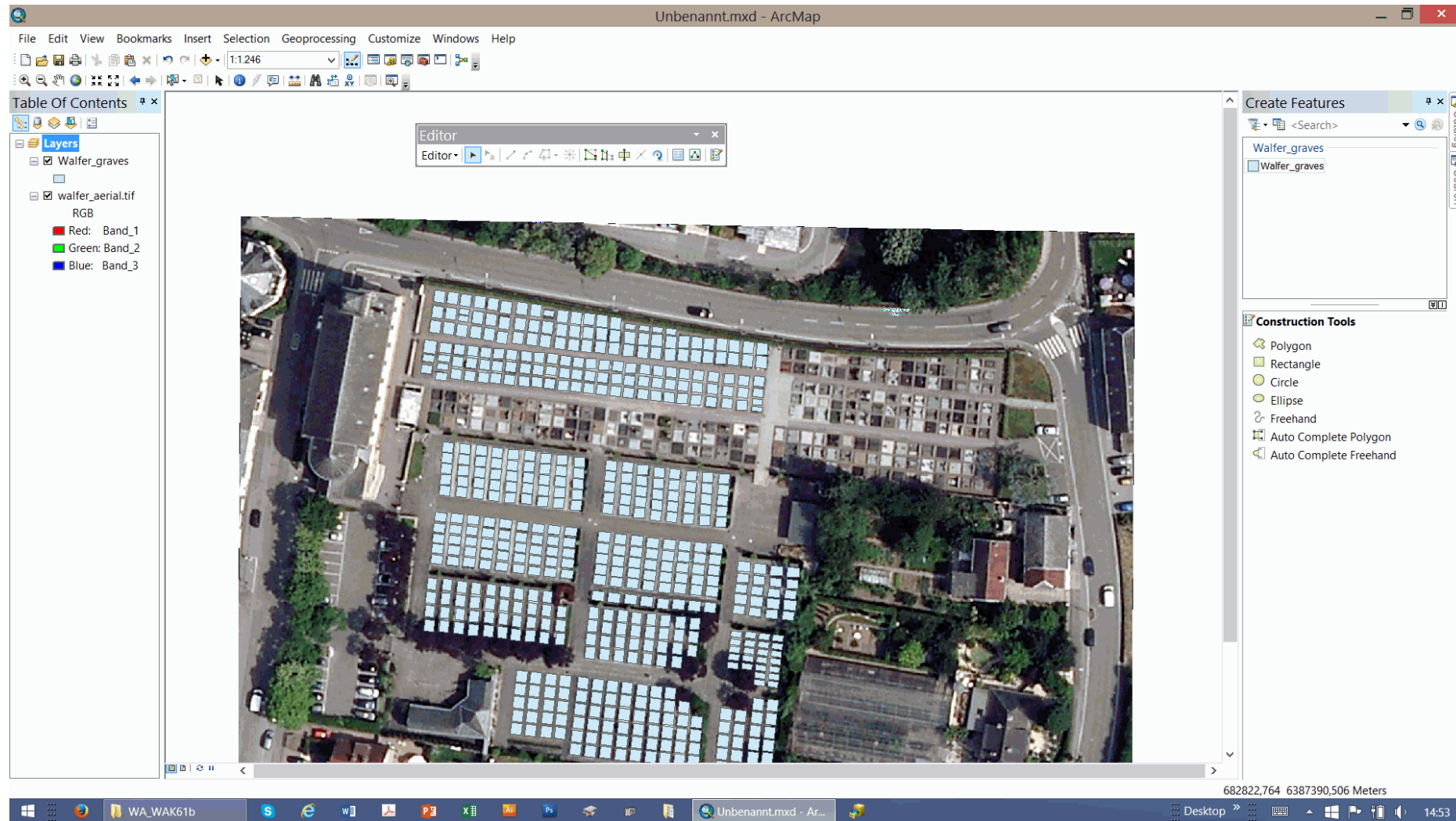
First methodology:

“Archaeology of the Present or of the Contemporary Past” (*l’archéologie de l’époque contemporaine*)

First tool:

Survey of cemeteries for ArcGIS (spatial analysis)

A stratigraphy of funeral objects without spade and spatula



Typical Luxembourgish? – Family graves and a petrified surface ...



Second thoughts: Diversifying approaches, methods, tools and sources

Frist part

spatial analysis

Survey of 15-30 cemeteries in Luxembourg, Germany, Belgium and France

Second part

Historical-critical method
Historical Geography
Archives

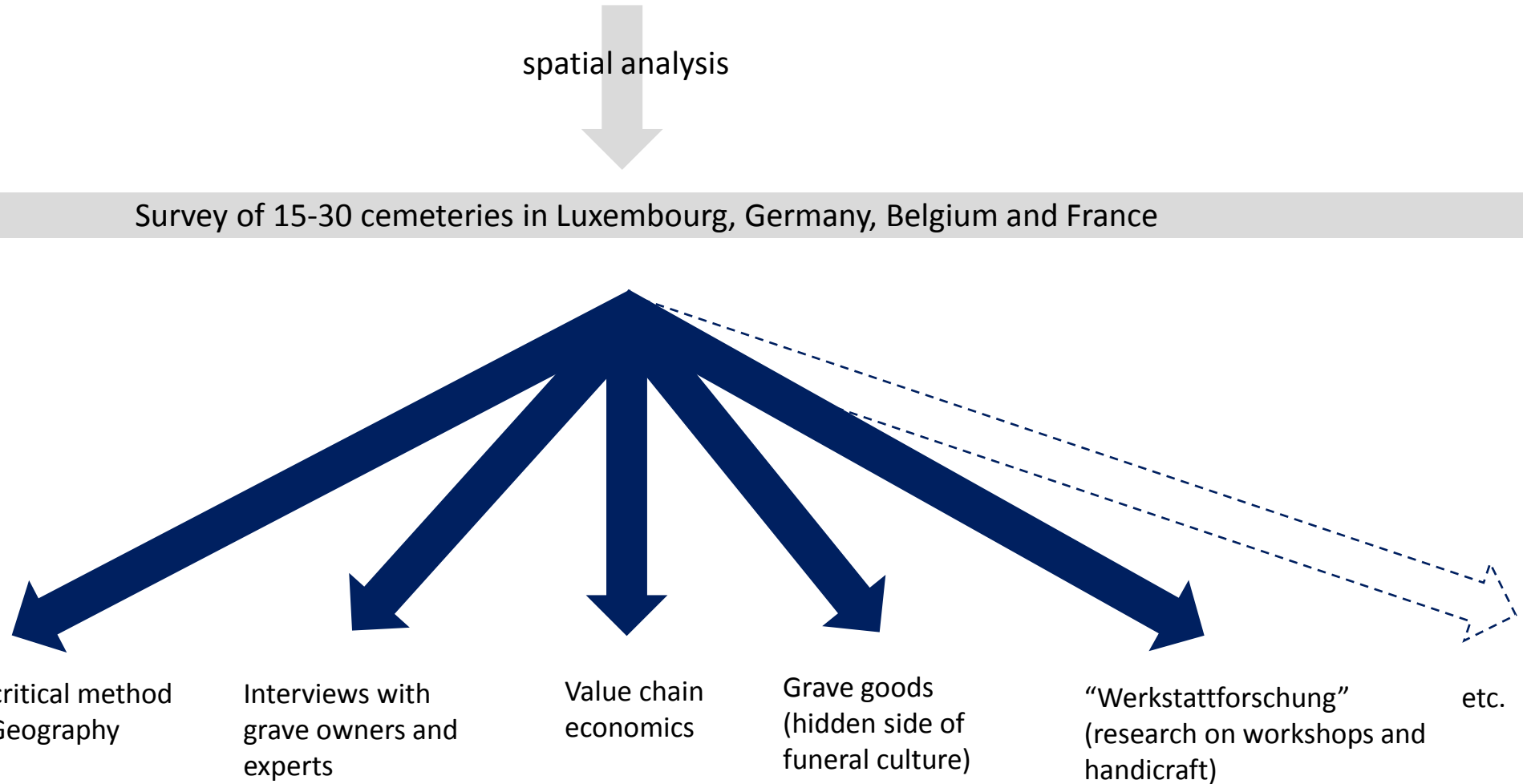
Interviews with
grave owners and
experts

Value chain
economics

Grave goods
(hidden side of
funeral culture)

“Werkstattforschung”
(research on workshops and
handicraft)

etc.

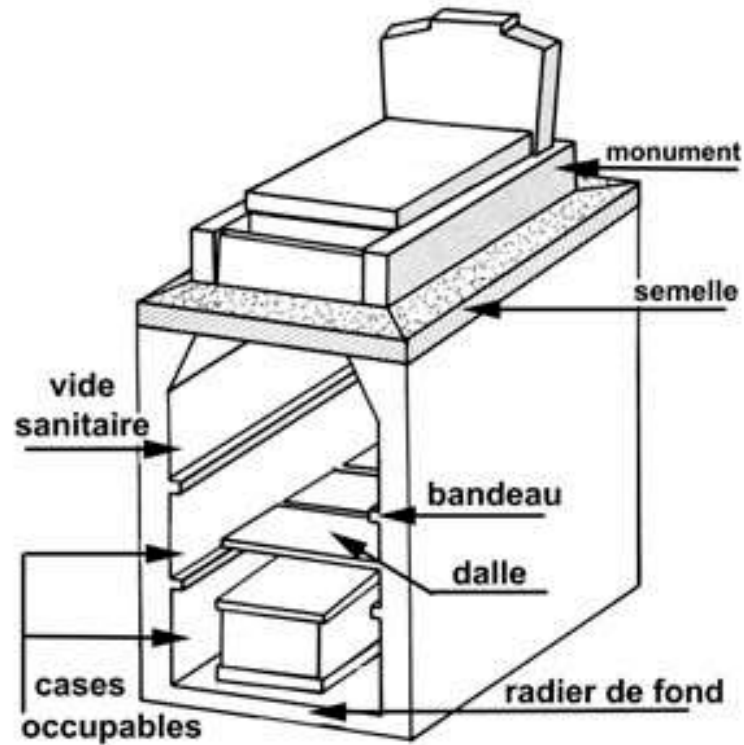


B – cemeteries in Luxembourg

... some preliminary findings...

Contemporary cemeteries in Luxembourg:

**German (and Belgium) on the surface,
French in der underground**



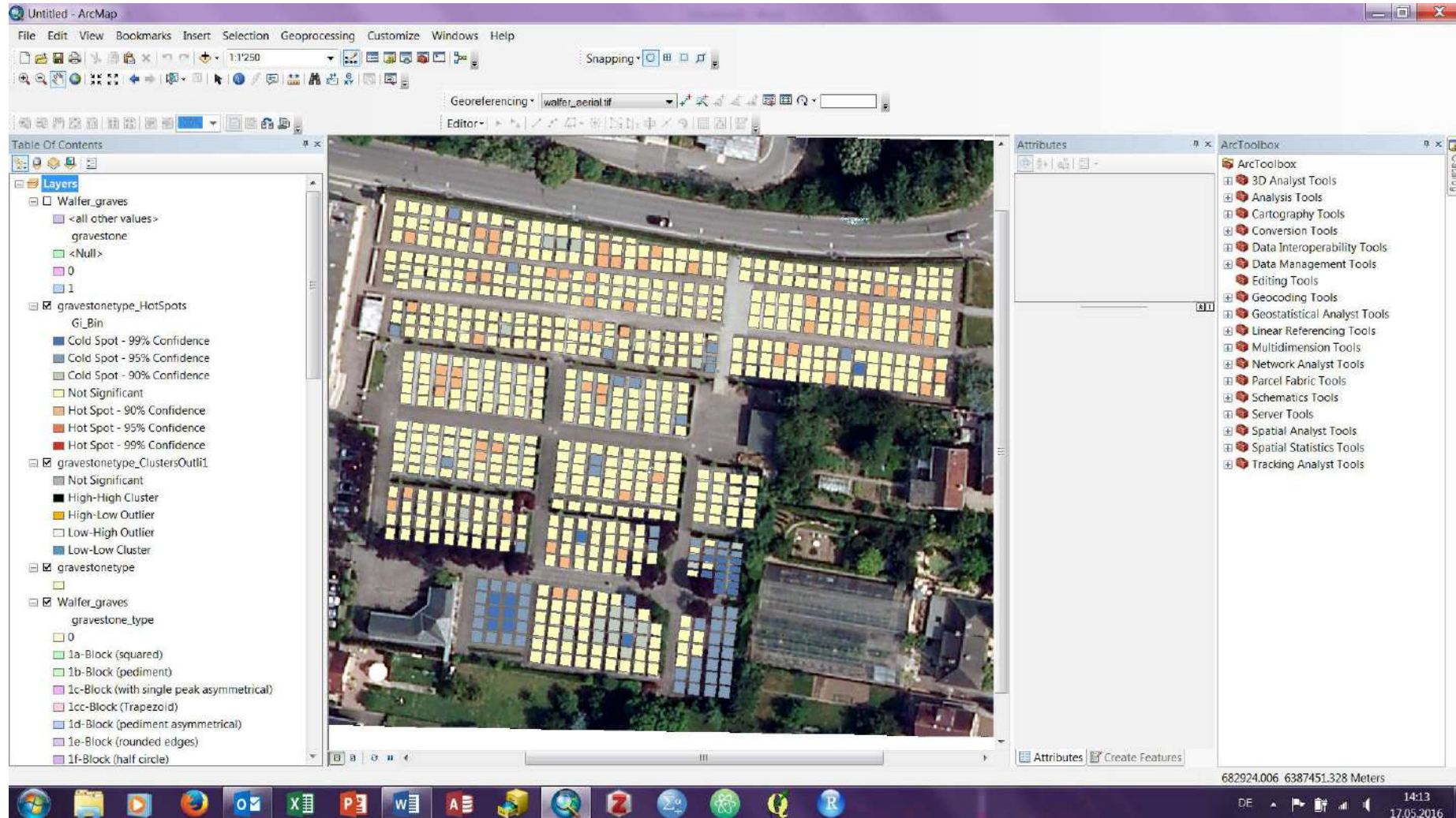
caveau(x) funéraire(s) or burial vault

Contemporary cemeteries in Luxembourg:

**German (and Belgium) on the surface,
French in der underground**

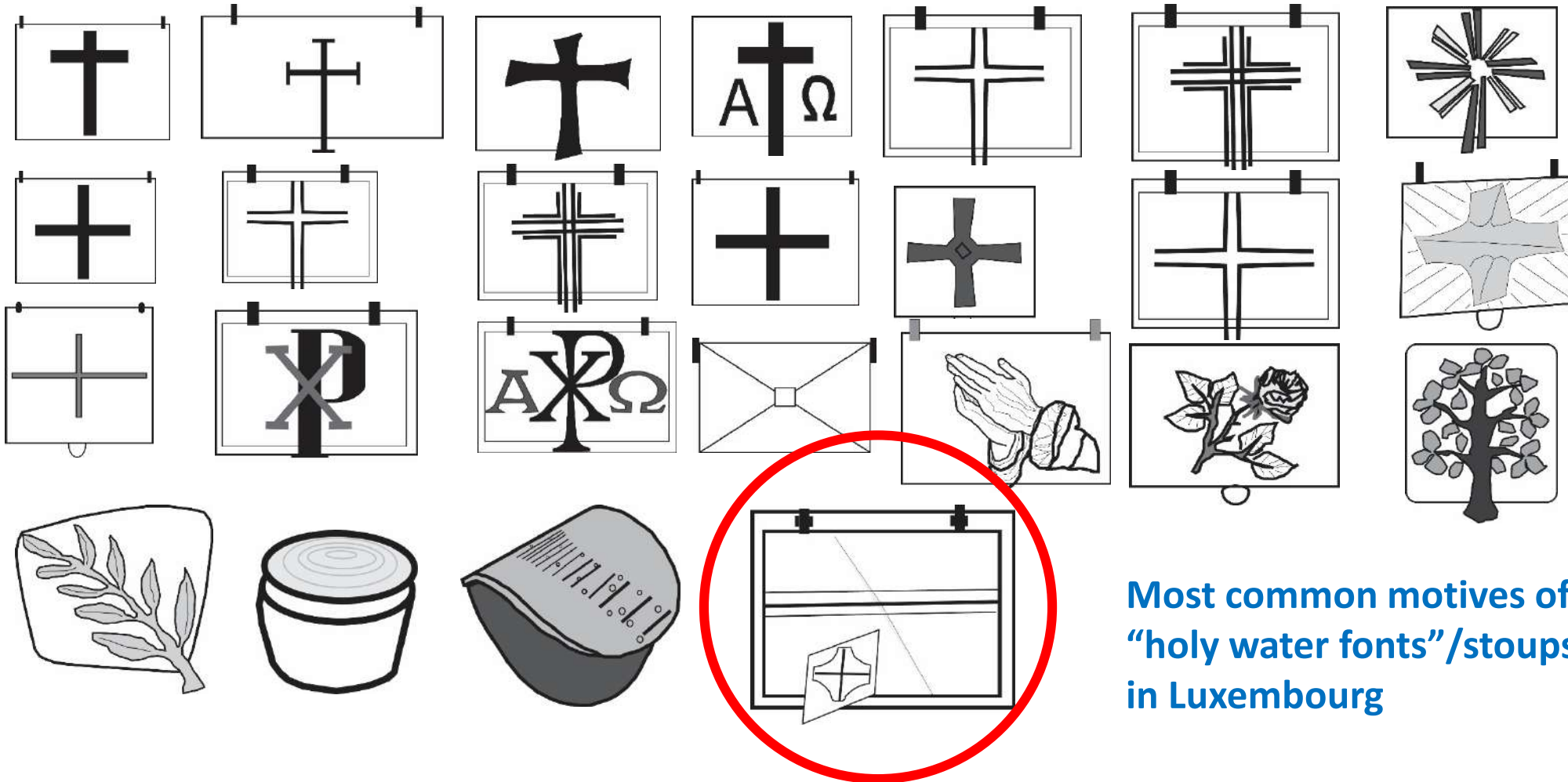


Contemporary cemeteries in Luxembourg: clusters and neighbouring effects



Contemporary cemeteries in Luxembourg:

the “production of space”
by local producers (workshop and handicraft)



Most common motives of
“holy water fonts”/stoups
in Luxembourg

Contemporary cemeteries in Luxembourg:

**the “production of space”
by local producers (workshop and handicraft)**



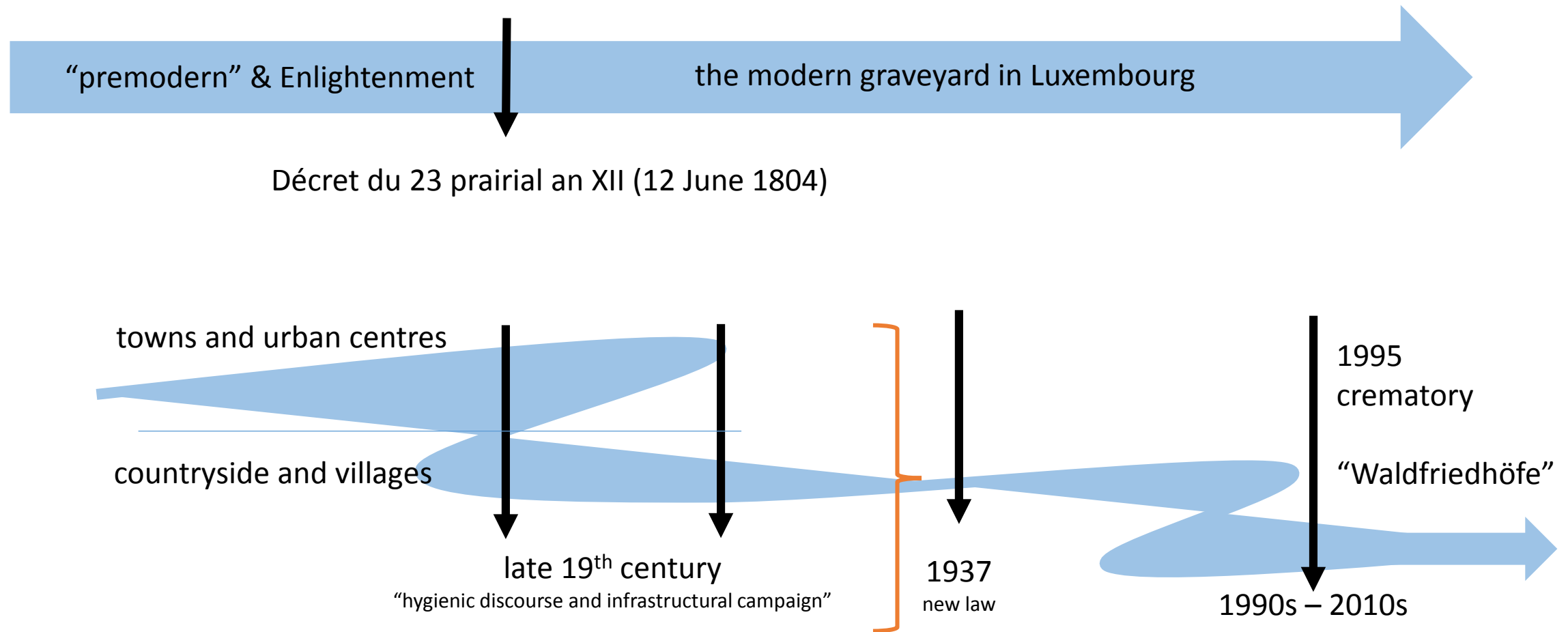
Family grave, communal cemetery in Speicher, Germany



Holy water font/stoup (right), grave lantern (left): pilot run / zero series

Contemporary cemeteries in Luxembourg:

an emerging order and
not an progressive narrative of modernization



Thank you!
