



6e Assises de l'historiographie luxembourgeoise

# **Wandel der Sepulkralkultur in Luxembourg: Zwischenbericht zu einem Forschungsprojekt**

Dr. Thomas Kolnberger, Dr. Christoph K. Streb

University of Luxembourg  
Research Unit IPSE – Institute of History

21 November 2015, 2pm-3:30pm  
Esch-sur-Alzette, Luxembourg

“Im ward – gemäß seinem ausdrücklichen Willen – als Mitglied des Hollerricher Feuerbestattungs=Vereins – das traurige Privileg, der erste Luxemburger zu sein, dessen Leichnam im Mainzer Crematorium verbrannt wurde. Seine Asche wurde nach deren Zurücksendung ziviler auf dem Kirchhofe von Hollerich beigesetzt.”

*Pfarrer Martin Blum in: Ons Hémecht 1 (1916), S. 25*

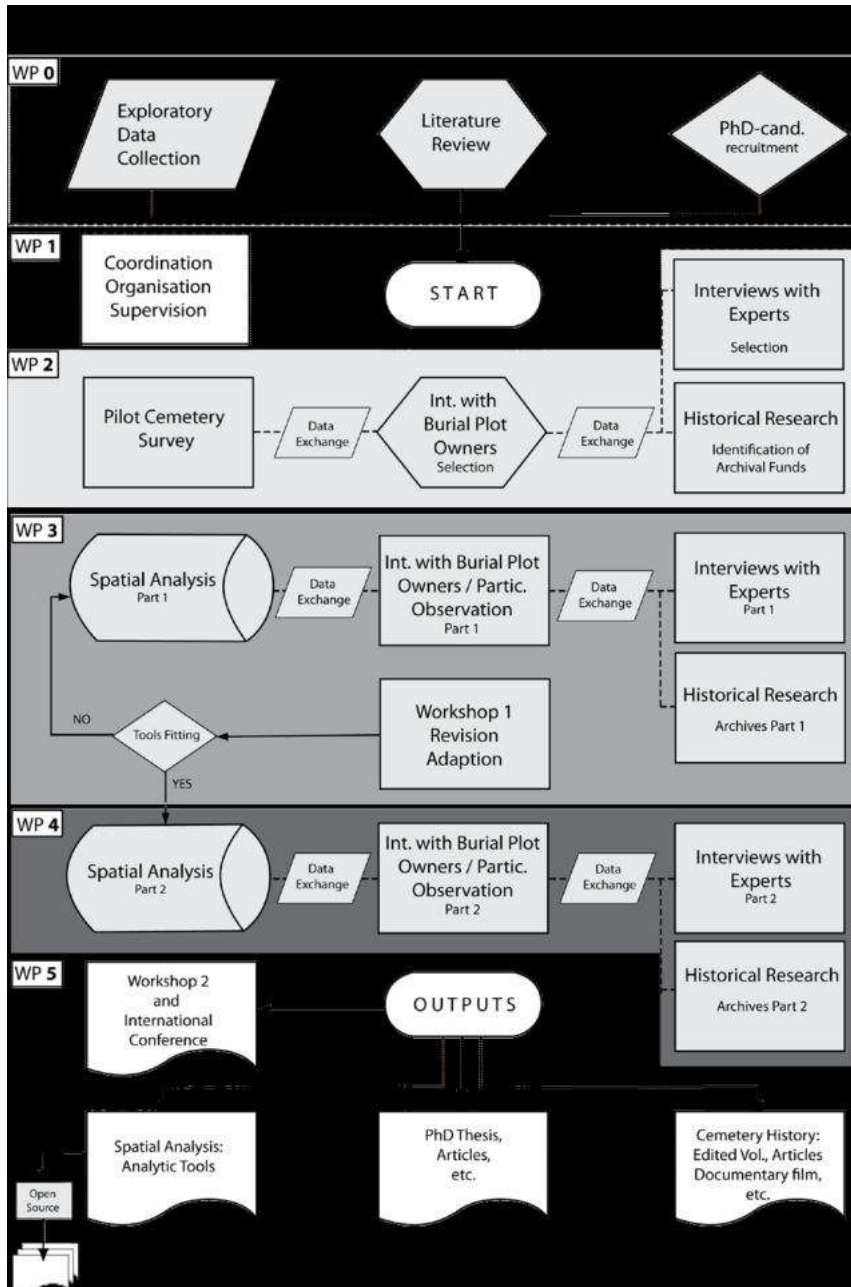


Krematorium Mainz, errichtet 1903



Krematorium Luxemburg-Hamm, errichtet 1995

# Workflow Chart

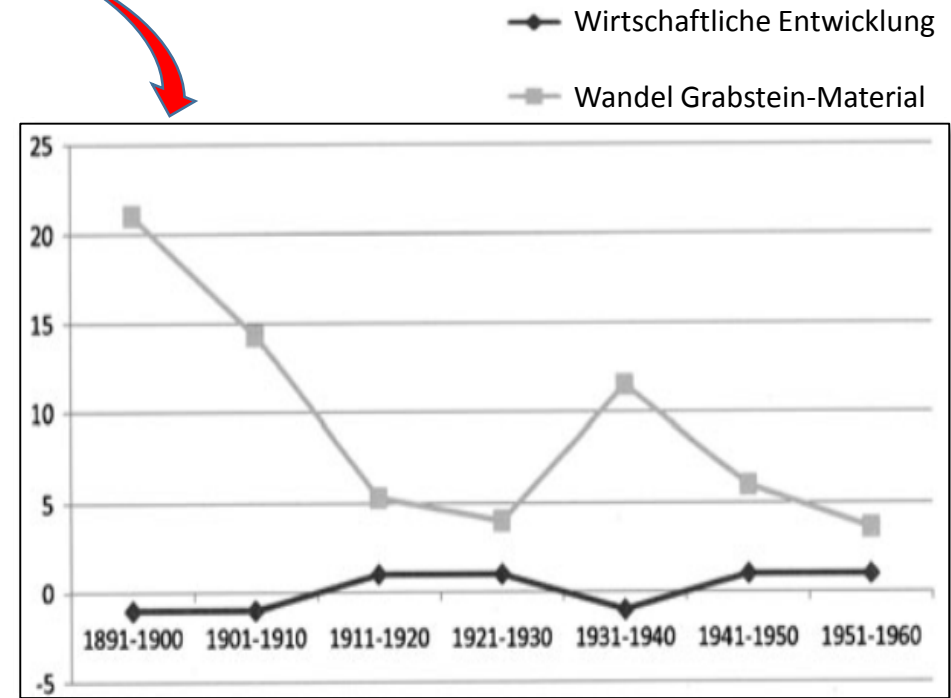
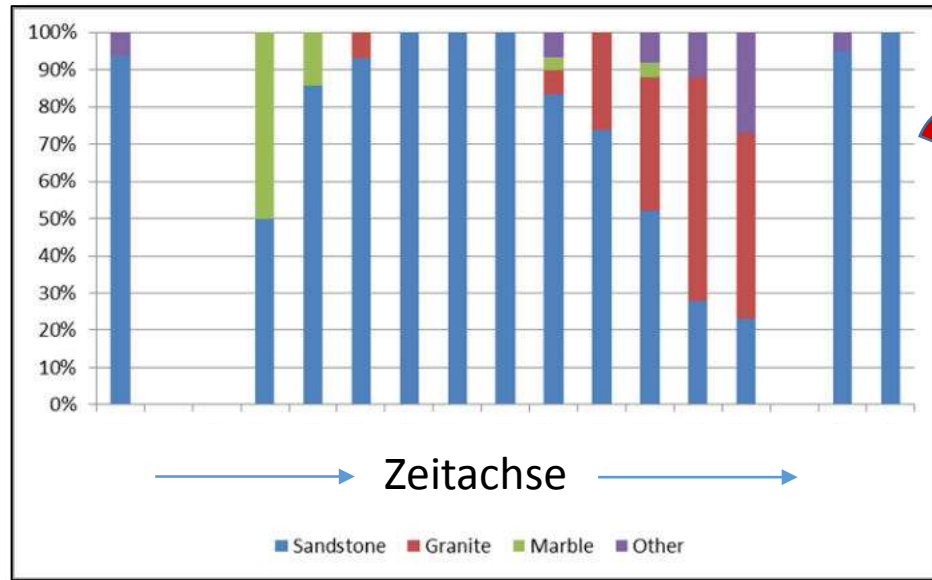


# Sample

Setting	Luxembourg	France	Belgium	Germany	Total
(post)industrial	2 sites (in the south)	1 sites	1 site	1 site (Saarland)	5
(sub)urban	2 sites (in the capital city and the Nordstad agglomeration)	1 site (Thionville)	1 site (Arlon)	1 site (Trier)	5
rural	2 sites (in the north)	1 site	1 site	1 site	5
<b>Total</b>	6	3	3	3	15

## Mixed methods:

- Spatial Analysis (Einsatz der ArcGIS Software)
- Geschichtswissenschaft (Archive und historische Quellen)
- Sozialwissenschaft/Ethnographie (Interviews und teilnehmende Beobachtung)



**Zusammenhang von Grabstein- und Friedhof Materialität/Raum und sozio-ökonomischen Entwicklungen und Transformationsprozessen**

cp. Streb, Tarlow & Cipolla (forthcoming);  
Mallios & Caterino (2011).

# Pilot-Projekt Walferdange















# Datensammlung in Walferdange

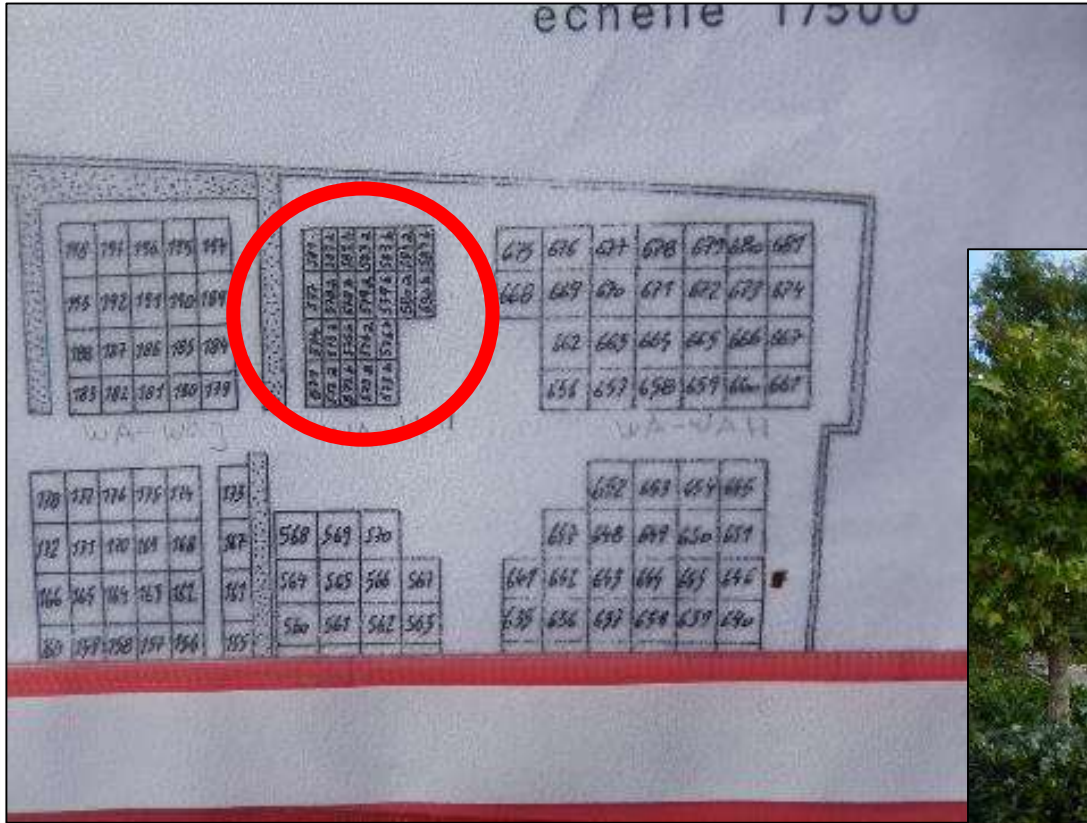
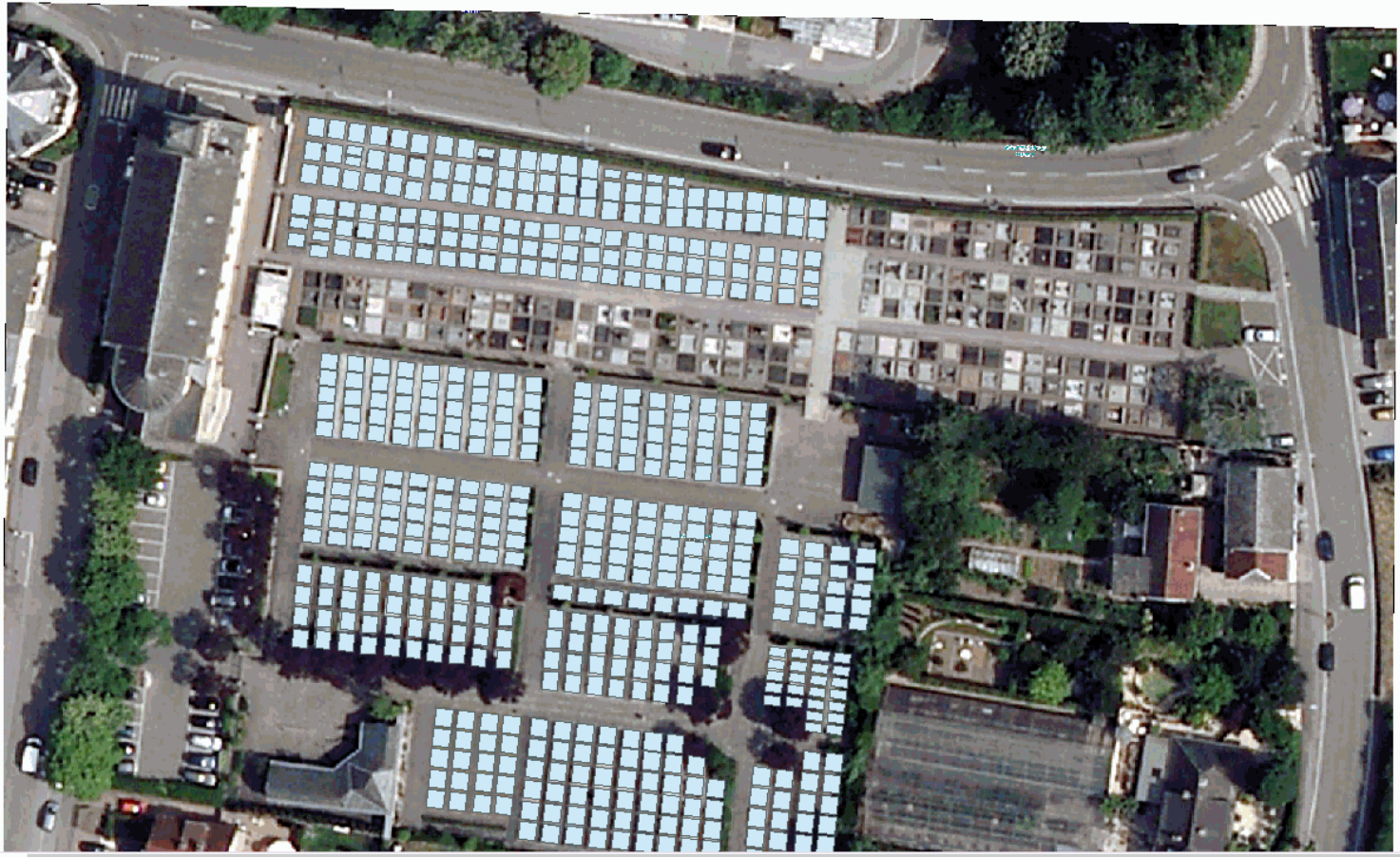




Table Of Contents

- Layers
  - Walfer\_graves
  - walfer\_aerial.tif
    - RGB
      - Red: Band\_1
      - Green: Band\_2
      - Blue: Band\_3

Editor



Create Features

- <Search>
- Walfer\_graves
  - Walfer\_graves

Construction Tools

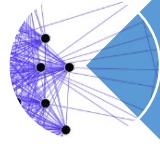
- Polygon
- Rectangle
- Circle
- Ellipse
- Freehand
- Auto Complete Polygon
- Auto Complete Freehand

682822,764 6387390,506 Meters

	A	B	C	D	E	F	G	H	I	J	K	L	M	N	O	P	Q	R
1	Grave	Dimensions	length (cm)	width (cm)	height (cm)	Horizontal	closed (slab)	open/partly open	flat	stepped (slightly)	material	color	polished	coarse	Vertical	gravestone (yes/no)	type	height (cm)
2	WAC1						1	0	0	1	granite	dark-grey	1	0		1	headstone	
3	WAC2						1	0	0	1	granite	red	1	0		0	0	
4	WAC3						1	0	0	1	granite	grey	1	0		0	0	
5	WAC4						1	0	0	1	granite	dark-grey	1	0		1	headstone	
6	WAC5						1	0	0	1	granite/quarzit	dark-green	1	0		1	headstone	
7	WAC6						1	0	0	1	granite/quarzit	brown	1	0		1	headstone	
8	WAC7						1	0	0	1	granite	dark-grey	1	0		0	0	
9	WAC8						1	0	0	1	granite	grey	1	0		0	0	
10	WAC9						1	0	0	1	granite	dark-grey	1	0		1	headstone	
11	WAC10						1	0	0	1	granite	red	1	0		0	0	
12	WAC11						1	0	0	1	granite	grey	1	0		0	0	
13	WAC12						1	0	0	1	granite/quarzit	brown	1	0		1	headstone	
14	WAC13						0	1	0	1	granite	grey-light red	1	0		0	0	
15	WAC14						1	0	0	1	granite	dark-grey	1	0		1	headstone	
16	WAC15						1	0	0	1	granite/quarzit	dark-grey	1	0		1	headstone	
17	WAC16						1	0	0	1	granite/stone	brown	1	0		0	0	
18	WAC17						1	0	0	1	granite	grey	1	0		1	headstone	
19	WAC18						1	0	0	1	granite	red	1	0		0	0	
20	WAC19						0	1	0	1	granite	brown	1	0		0	0	
21	WAC20						0	1	0	1	granite	grey	1	0		1	headstone	
22	WAC21						1	0	0	1	granite	grey	1	0		0	0	
23	WAC22						1	0	0	1	granite	dark-grey	1	0		1	headstone	
24	WAC23						0	1	1	0	granite & flower bed	grey	1	0		1	headstone	
25	WAC24						0	1	0	1	granite	grey	1	0		0	0	
26	WAC25						1	0	0	1	granite	grey	1	0		0	0	
27	WAC26						0	1	0	1	granite	grey	1	0		1	headstone	
28	WAC27						1	0	0	1	granite	brown	1	0		0	0	
29	WAC28						1	0	0	1	granite	grey	1	0		1	headstone	
30	WAC29						0	1	0	1	granite	dark-grey	1	0		1	headstone	
31	WAC30						1	0	0	1	granite	dark-grey	1	0		1	headstone	



Global Value Chain Analysis, etc.



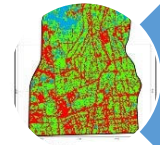
Institutioneller Rahmen



Region Luxembourg



Ethnographie



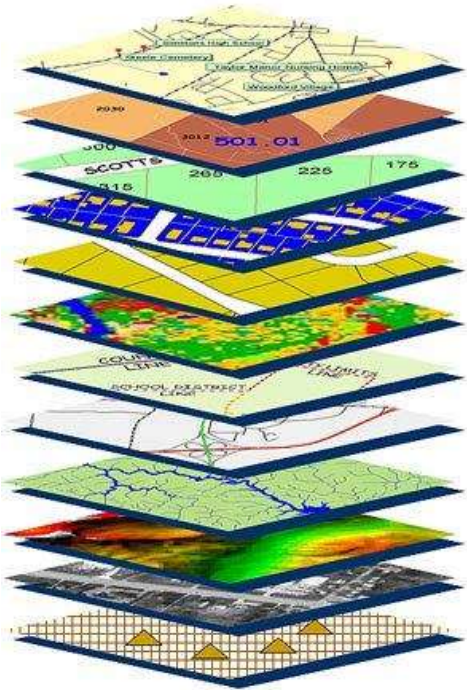
Spatial Analysis

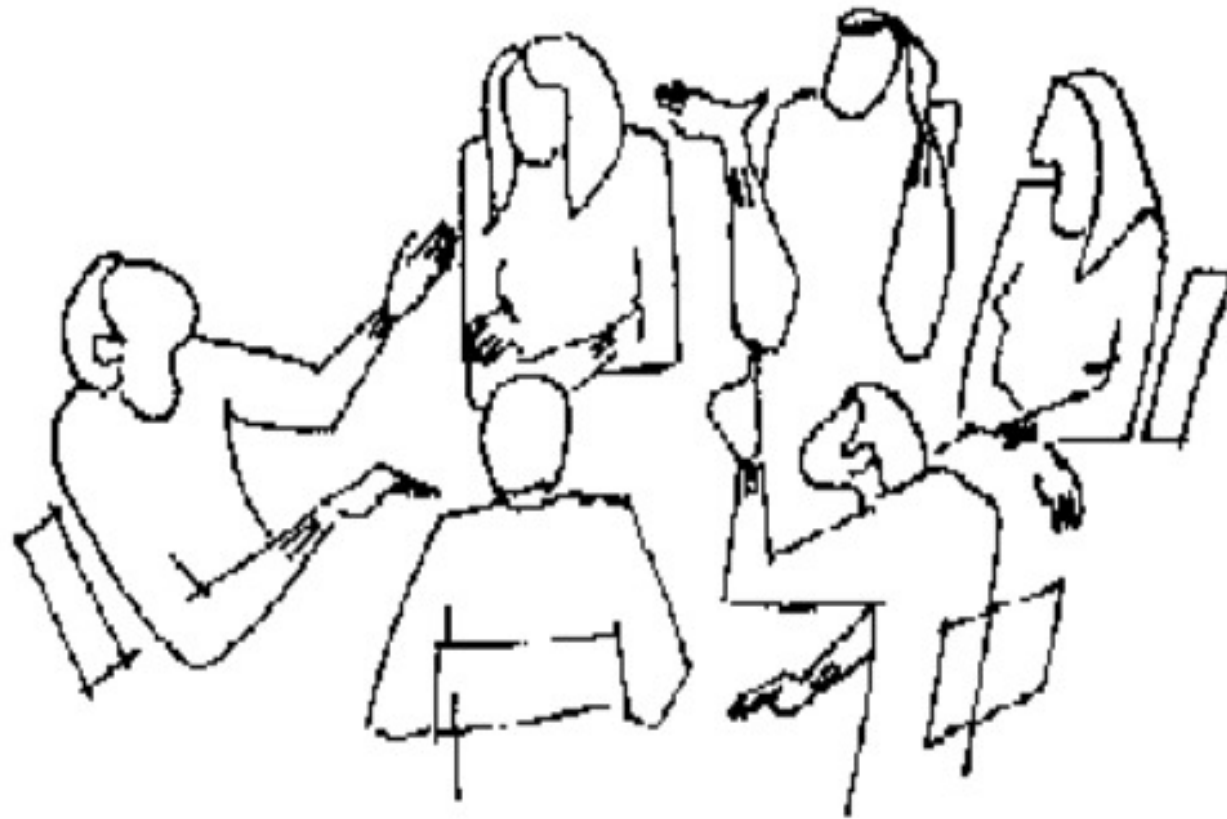


Friedhof



Grabmal







## **Project proposal**

Investigate social changes through the prism of sepulchral culture and space (necrogeographies / deathscapes)

- interactions of “people and things”: materiality, mentalities and institutional orders
- social transformation processes (individualisation, pluralisation, secularisation, de- and resacralisation)
- transformations of local and national traditions due to interlinked phenomena of (hyper)modernisation, globalisation and migration

### **Challenges:**

- (1) to overcome the inherent limitations of surveying by applying computer-aided geographical methods to the research of cemeteries
- (2) to provide empirical data of current practices of grave design and maintenance based on ethnographical research
- (3) to investigate changing rules and regulations in context of nation-state formation and European integration

### **Time frame:**

Early 19th century (Napoleon, Dutch administration, independency in 1815/1839/1890) until today

### **Space:**

Grand Duchy of Luxembourg and of the neighboring regions of Belgium, France and Germany

Back-Up